

**FEEL 679**

*unika vaev*  
—  
INSTYLE

Bringing Design to Life

# FEEL 679



/10 JUBILANT



/11 MERRY



/16 EXCITED



/17 AT HOME



/18 CALM



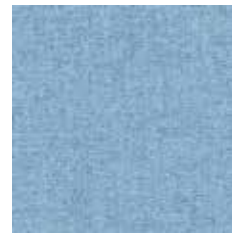
/20 INSPIRED



/35 LUCKY



/36 SOPHISTICATED



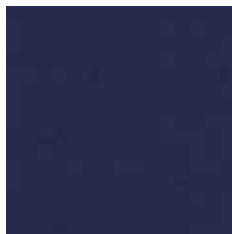
/37 WONDERFUL



/39 LIBERATED



40/ SECURE



/41 PRECIOUS



/42 GREAT



/43 CHILLED



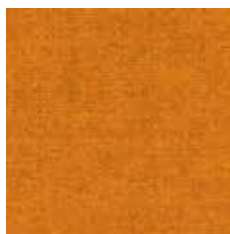
/51 DARING



/52 UP FOR IT



/53 ADVENTUROUS



/54 OPTIMISTIC



/55 PEACHY



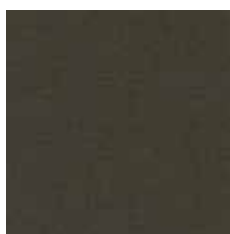
/62 PLAYFUL



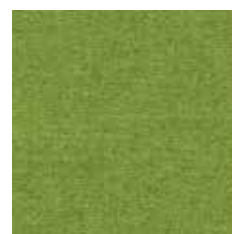
/63 NOSTALGIC



/64 THRILLED



/65 ZEN



/67 FREE



/68 SPLENDID

Patterns shown are not to scale  
Product may vary in color due to the nature of the media  
Please refer to website for current color range

**unika vaev**  
INSTYLE

# FEEL 679



/72 LOVED



/73 REFINED



/74 FABULOUS



/75 WANTED



/76 AMAZING



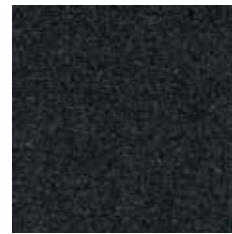
/77 BEAUTIFUL



/78 AWESOME



/79 RESPECTED



/80 INVINCIBLE



/81 CONFIDENT



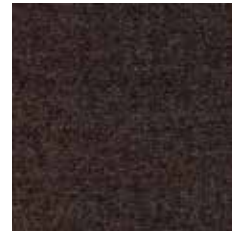
/83 YOUNG AGAIN



/83 ALIVE



/88 UNIQUE



/89 SATISFIED



/90 POSITIVE



/91 GROUNDED





/93 ELATED

Patterns shown are not to scale  
Product may vary in color due to the nature of the media  
Please refer to website for current color range

**unika vaev**  
INSTYLE

# FEEL 679



<b>CONTENT</b>	20% Nylon, 65% Wool, 15% Alpaca
<b>WIDTH / WEIGHT</b>	55" / 12.33 Oz Linear Yard
<b>REPEAT</b>	None
<b>FINISH</b>	None
<b>DURABILITY</b>	 46,500 Martindale Cycles
<b>PERFORMANCE</b>	 Meets all ACT standards
<b>SEAM SLIPPAGE</b> ASTM D4034-92	47.4 lbs Warp, 31.7 lbs Fill
<b>PILLING</b> ASTM D3511	Class 3.5
<b>LIGHTFASTNESS</b> ASTM D3511	Class 5 (40 Hours)
<b>FLAMMABILITY</b> Cal Bulletin 117E, UFAC, AS/NZS 1530.3, AS/NZS 3837, ISO 5660.1 IMO A.652(16)/IMO2010 FTP Code Pt8	
<b>APPLICATION</b>	Upholstery, Screen, Acoustic Drapery
<b>CLEANING CODE</b>	S

## ENVIRONMENT

- 80% rapidly renewable content.
- Environmentally Improved Production Process: reduced water and energy consumption, recycling of waste.
- Wool absorbs indoor air contaminants, benefiting indoor air quality.
- 80% biodegradable (natural fiber content) and recyclable.

## GREEN STAR + LEED

- FEEL can be used on white furniture certified to Ecospecifier, AFRDI, ECNZ and GECA.
- The Green Star Rating Tool states "Where at least 90% of an item's mass is certified to a GBCA recognized standard, the item can be entered as a certified product at Level A, B or C." Therefore any fabric can be used as fabrics are almost always under 10% by weight of a furniture item.
- 80% rapidly renewable content contributes to LEED MR Credit 6 Rapidly Renewable Materials.

## LEED

FEEL can contribute points to the following LEED criteria:

- Bio-Based + Rapidly-Renewable Content (80%)
- Low-VOC
- Extended Producer Responsibility Recycling Program

## WELL

FEEL can contribute to the following WELL criteria:

- Low VOC / VOC Reduction: FEEL is low VOC
- Toxic Material Reduction: FEEL is free of PFCs, flame retardants, phthalates and urea formaldehyde