

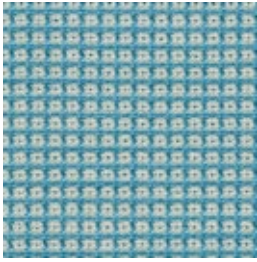
MUSE 62114

unika vaev

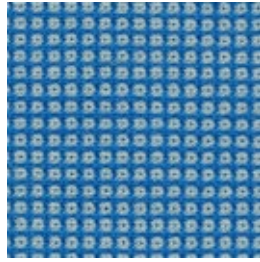
INSTYLE

Bringing Design to Life

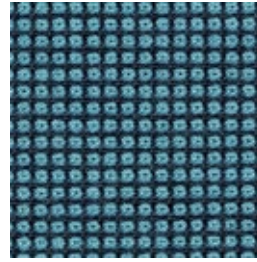
MUSE 62114



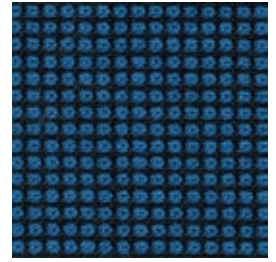
/250 TRUST



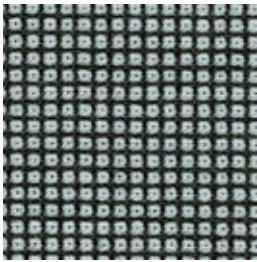
/140 DANCER



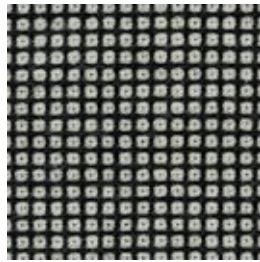
/180 HARP



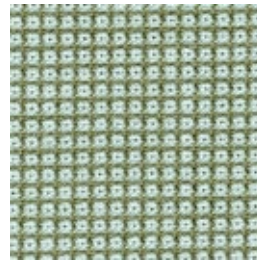
/110 ARTIST



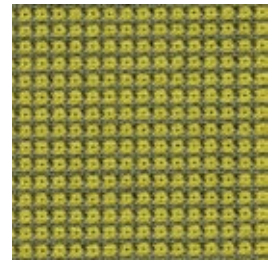
/130 CONCEPT



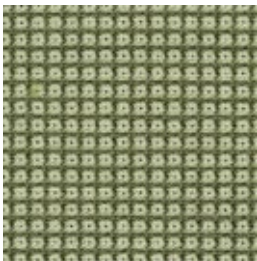
/260 UNITE



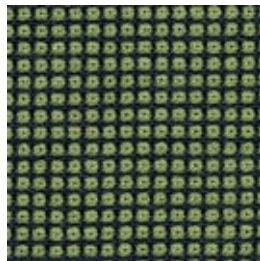
/150 ENCHANT



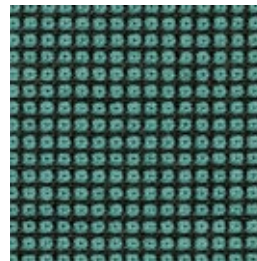
/190 IN SYNC



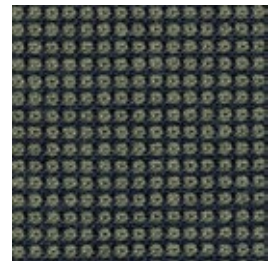
/230 REVEL



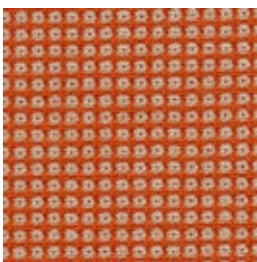
/170 GUIDE



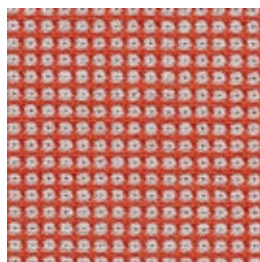
/220 PROTEGE



/240 SABLE



/120 BRILLIANT



/210 MODEL



/160 FAMOUS



/200 KEY



/270 VISUAL

Patterns shown are not to scale
Product may vary in color due to the nature of the media
Please refer to website for current color range

unika vaev
INSTYLE

MUSE 62114



CONTENT 100.0% Worsted EthEco® Wool

WIDTH / WEIGHT 54" / 11.21 Oz Linear Yard

REPEAT None

FINISH None

DURABILITY  100,000 Martindale Cycles

PERFORMANCE 
Meets all ACT standards

SEAM SLIPPAGE
ASTM D4034-92

PILLING
ASTM D3511

LIGHTFASTNESS
ASTM D3511

FLAMMABILITY
Cal 117
ASTM E84-Unadhered
NFPA 260, UFAC
IMO A-652 (16) 8.2 8.3
AS/NZS 1530.3 and 3837

APPLICATION Upholstery

CLEANING CODE S - Spot clean using a mild water-free solvent, or dry cleaning product. Clean only in a well ventilated room and avoid any product containing Carbon Tetrachloride or other toxic materials.

ENVIRONMENT

- 100% sustainable, rapidly renewable content: EthEco® wool is sourced from non-mulesed sheep cared for on holistically-managed farms.
- Environmentally Improved Production Process: Manufactured to strict environmental criteria, reduced water and energy use, reuse of water (30%), recycling of waste, no hazardous substances.
- Wool absorbs indoor air contaminants, benefiting indoor air quality.
- Certified as Low-VOC.
- 100% biodegradable and recyclable.

GREEN STAR + LEED

- MUSE is certified to the EU Ecolabel.
- MUSE can be used on white and upholstered furniture certified by AFRDI, GECA, ECNZ and Ecospecifier (Level B + C).
- The Green Star Rating Tool states "Where at least 90% of an item's mass is certified to a GBCA recognized standard, the item can be entered as a certified product at Level A, B or C." Therefore any fabric can be used as fabrics are almost always under 10% by weight of a furniture item.
- 100% rapidly renewable content contributes to LEED MR Credit 6 Rapidly Renewable Materials.

LEED

MUSE can contribute points to the following LEED criteria:

- Bio-Based + Rapidly-Renewable Content (100%)
- Low-VOC
- Extended Producer Responsibility Recycling Program

WELL

MUSE can contribute to the following WELL criteria:

- Low VOC / VOC Reduction: MUSE is low VOC
- Toxic Material Reduction: MUSE is free of PFCs, flame retardants, phthalates and urea formaldehyde