

**SPAZER**



**unika vaev**

**fraster** 

Hear yourself think®

# SPAZER FELT COLORS



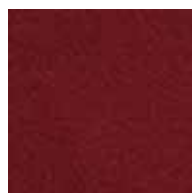
102 Red



105 Orange



130 Ochre



136 Wine



150 Off White



160 Beige



170 Silver



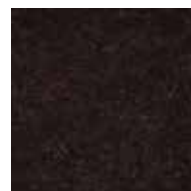
175 Charcoal



190 Beaver



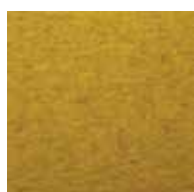
220 Deer



250 Truffle



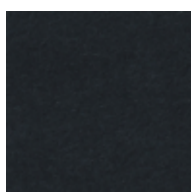
262 Mint



274 Curry



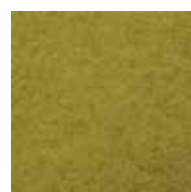
300 Anthrazite



305 Ink



312 Azur



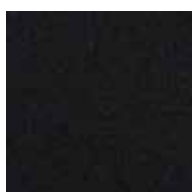
398 Citrus



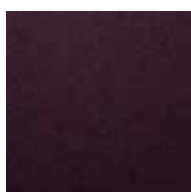
399 Banana



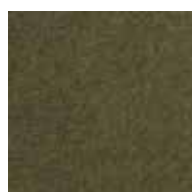
415 Dust Green



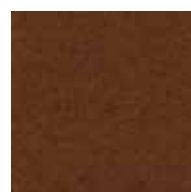
426 Black



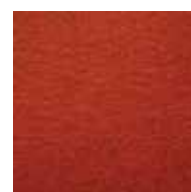
437 Aubergine



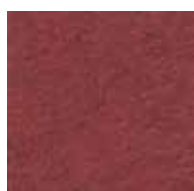
448 Moss



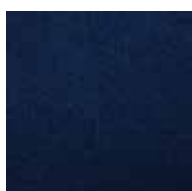
463 Sepia



484 Tomato



534 Flamingo



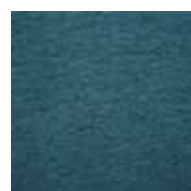
539 Midnight



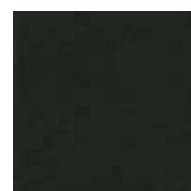
540 Ocean



541 Sky



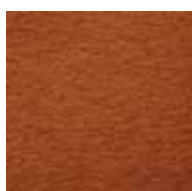
595 Cadet



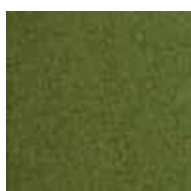
560 Emerald



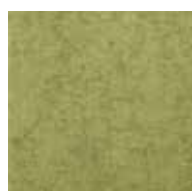
645 Iceberg



723 Peach



732 Fern



749 Spring

Patterns shown are not to scale  
Product may vary in color due to the nature of the media  
Please refer to website for current color range

unika vaev

fraster 

# SPAZER MOUNTING



## Screw Mounting

The runner can be fixed with screws from underneath the table, alternatively with extra clamping brackets. You can fix the runner alongside the table, on both the long and short sides.

## Clamping Bracket Mounting

As an alternative to mounting the Spacer runner to the table top with screws, it may also be mounted to the table top by using clamping brackets. Spacer clamping brackets sold separately.

Maximum table top thickness is 2 1/8" (55mm)



Patterns shown are not to scale  
Product may vary in color due to the nature of the media  
Please refer to website for current color range

unika vaev

fraster 

# SPAZER



<b>PRODUCT</b>	Spazer
<b>CONTENT</b>	100% Wool Felt exterior 100% Foamed PVC Plate interior
<b>DIMENSIONS</b>	23 5/8" - 82 3/5" (L) x 19 3/4" (H) (600mm - 2100mm x 500mm)
<b>DEPTH</b>	0.47" (1 5/32" 12mm)
<b>APPLICATION</b>	Screen
<b>MOUNTING OPTIONS</b>	Aluminum runner with screws or clamping brackets for table tops 2 1/8" wide or less.
<b>DESCRIPTION</b>	Spazer is a first response to retrofitting office benching or other open-plan systems that require a reduction in ambient noise. Absorbent wool felt screens are readily attached to horizontal surfaces using the universal Spazer aluminum runner attachment or clamping brackets. Each table screen can be color coordinated to fit your needs.

## ENVIRONMENT

- HHI Compliant

