

HERRINGBONE 712



unika vaev

INSTYLE

Bringing Design to Life

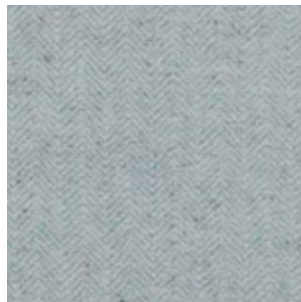
HERRINGBONE 712



/10 DEFINE



/19 AUTHENTIC



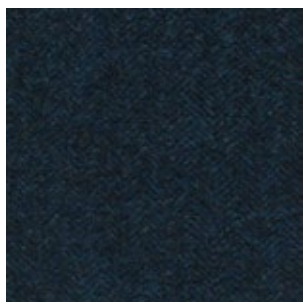
/35 ELEGANCE



/37 STYLE



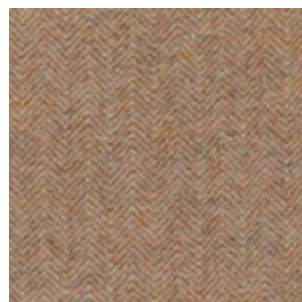
/38 ISLE



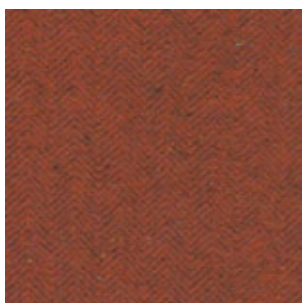
/40 CAPE



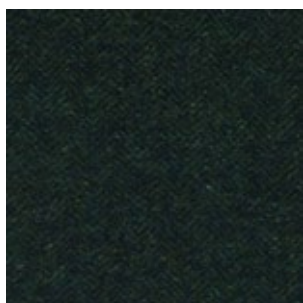
/42 CROFT



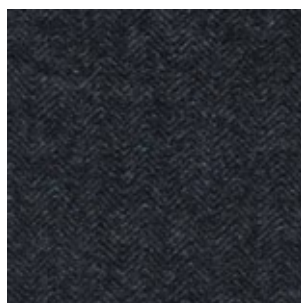
/53 REVIVAL



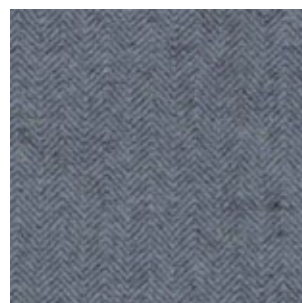
/54 ICONIC



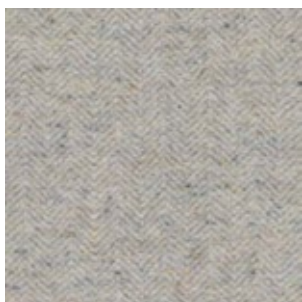
/67 LEWIS



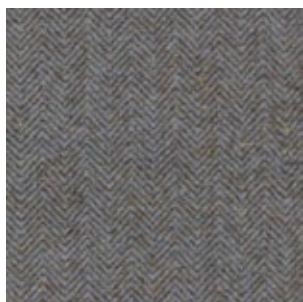
/79 TRADITION



/81 PROVENANCE



/82 SHETLAND



/89 WEAVER








/91 HEBRIDES

Patterns shown are not to scale
Product may vary in color due to the nature of the media
Please refer to website for current color range

unika vaev
INSTYLE

HERRINGBONE 712



CONTENT	98% Wool, 2% Nylon
WIDTH / WEIGHT	54" / 11.8 Oz Linear Yard
REPEAT	(w) 0.87" x (h) 0.43"
FINISH	None
DURABILITY	 60,000 Martindale 35,000 Double Rubs
PERFORMANCE	    Meets all ACT standards
SEAM SLIPPAGE ASTM D4034-92	39 lbs Warp, 43.5 lbs Fill
PILLING ASTM D3511	Class 3.5
LIGHTFASTNESS ASTM D3511	Class 40 (40 Hours)
FLAMMABILITY ASTM E84 CAL 117E AS/NZS 1530.3 + 3837 ISO 5660.1 IMO A.652(16)/IMO2010 FTP Code Pt8	
APPLICATION	Upholstery, Screens, Wall Panels
CLEANING CODE	S - Spot clean using a mild water-free solvent, or dry cleaning product. Clean only in a well ventilated room and avoid any product containing Carbon Tetrachloride or other toxic materials.

ENVIRONMENT

- 98% rapidly renewable content.
- Environmentally Improved Production Process: Manufactured to strict environmental criteria, reduced water (6% savings) and energy use, non-potable water supply (100% rain and ground water), recycling of waste.
- Manufacturer has a certified EMS (Enviro-Mark Diamond).
- Wool absorbs indoor air contaminants, benefiting indoor air quality.
- 98% biodegradable (natural fiber content) and recyclable.

GREEN STAR + LEED

- Herringbone can be used on white furniture certified by AFRDI, GECA, Ecospecifier (Level B + C) and ECNZ.
- The Green Star Rating Tool states "Where at least 90% of an item's mass is certified to a GBCA recognized standard, the item can be entered as a certified product at Level A, B or C". Therefore, any fabric can be used as fabrics are almost always under 10% by weight of a furniture item.
- 98% rapidly renewable content contributes to LEED MR Credit 6 Rapidly Renewable Materials.

LEED: HERRINGBONE can contribute points to the following LEED criteria: Bio-Based + Rapidly-Renewable Content (98%), Low-VOC + Extended Producer Responsibility Recycling Program

WELL: HERRINGBONE can contribute to the following WELL criteria: Low VOC / VOC Reduction + Toxic Material Reduction: HERRINGBONE is free of PFCs, flame retardants, phthalates and urea formaldehyde