

ECOUSTIC® TIMBER CEILING BLADE



unika vaev
INSTYLE

Hear yourself think®

ECOUSTIC® TIMBER CEILING BLADE FINISHES



HEMLOCK Clear



HEMLOCK White Wash



HEMLOCK Walnut



HEMLOCK Espresso



HEMLOCK Hickory



HEMLOCK Shale



SPOTTED GUM Clear*



BIRCH PLYWOOD Clear



WESTERN RED CEDAR Clear*
(3 common shades)

ECOUSTIC® TIMBER CEILING BLADE PROFILES



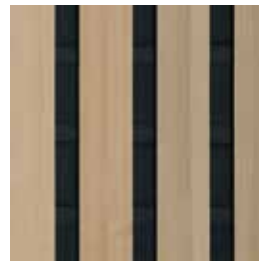
1830-13



3018-14



3018-17



3060-7



3060-8



* Custom Stains are available for a 10 box minimum with no upcharge

** Some finishes are not available in selected profiles

Wood grain and color may vary due to the nature of the media

Product not to scale

ECOUSTIC® TIMBER CEILING BLADE



DESCRIPTION

ecoustic® Timber Ceiling Blade is an acoustic modular ceiling tile combining superior sound absorption with the elegance of PEFC-certified solid wood, available in five profile options. When installed, the drop-ceiling tiles disguise the ceiling grid giving the appearance of a continuous linear ceiling system.

CONTENT

100% PEFC-certified wood & acoustic scrim

DIMENSIONS

Available in two standard tile sizes:
 23 5/8" x 23 5/8" or 47 1/4" x 23 5/8"
 (600mm x 600mm or 1200mm x 600mm)
 Custom Tile size:
 95 1/2" x 23 5/8" (2400mm x 600mm)

APPLICATION

Ceiling

FIRE RATINGS

ASTM E84
 AS/NZS 3837

Class B
 Group 3

VOC

ASTM D5116

Complies

ACOUSTIC

AS/ISO 354
 using 16" Air Gap

NRC range: 0.40 - 0.55 (without infill)

NRC range: 0.65 - 0.85 (with infill)

- 1830-13: NRC 0.50 | with Infill NRC 0.80
- 3018-14: NRC 0.50 | with Infill NRC 0.80
- 3018-17: NRC 0.55 | with Infill NRC 0.85
- 3060-7: NRC 0.50 | with Infill NRC 0.75
- 3060-8: NRC 0.40 | with Infill NRC 0.65

*Please see graphs on following page

IMPORTANT

Drop Ceiling Specification: ecoustic® Timber Ceiling Blade Tiles fit standard ceiling tile grids at both 9/16" (15mm) or 15/16" (24mm) exposed tee grid systems in slim and standard profiles.

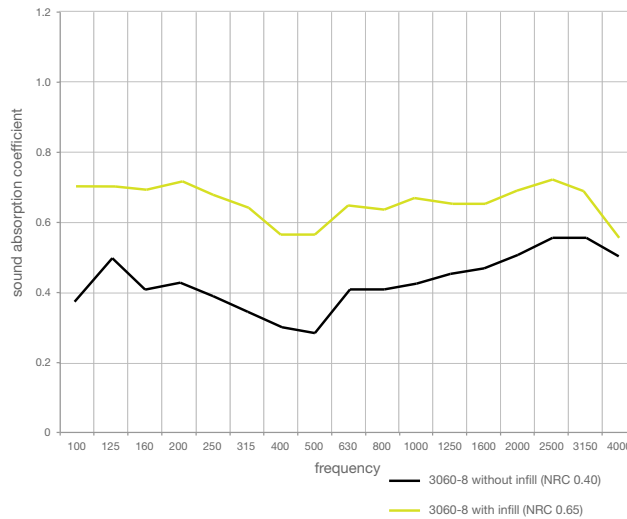
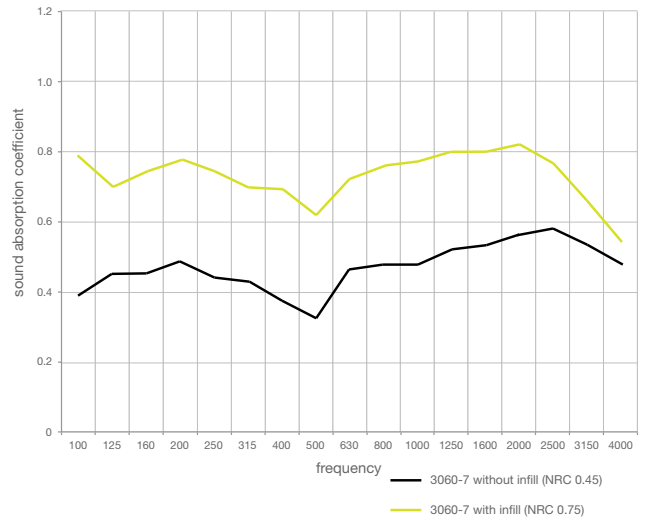
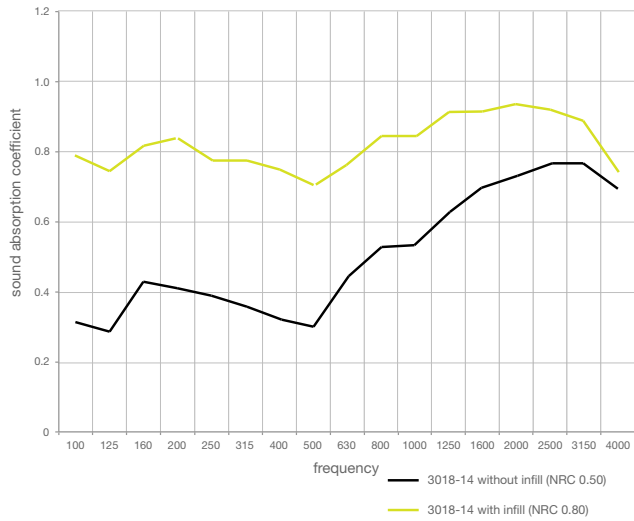
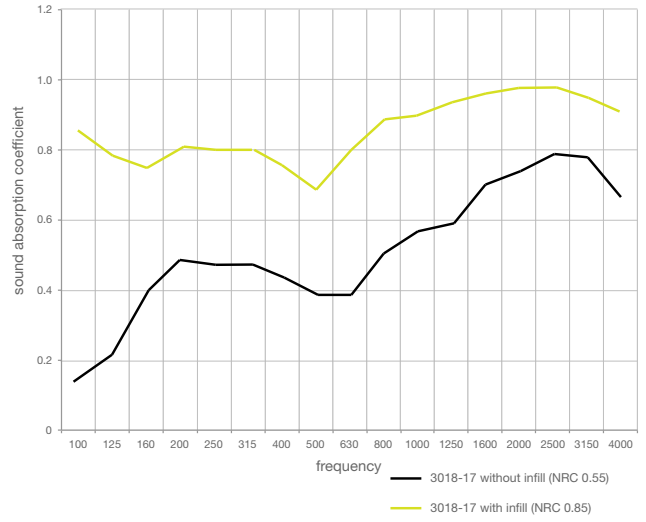
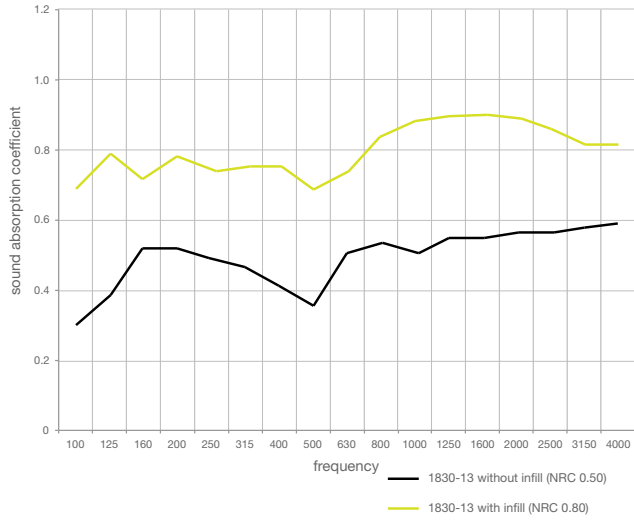
Low-VOC and PEFC Certified: ecoustic® Timber Blade systems production is PEFC certified and committed to using wood from sustainably managed forests.

Acoustic: All ecoustic® Timber Ceiling Blade Tiles are supplied with an acoustic scrim fabric. The combination of the Tile Blades with the acoustic scrim fabric achieves an NRC of up to 0.55, and has been specifically designed to complement the full range of ecoustic® Timber Ceiling Blade systems. Timber Ceiling Blade Tiles achieve an NRC of 0.85 with the inclusion of ecoustic® Infill. To further enhance sound-absorption a 0.98" ecoustic® core panel may be installed behind each tile.

Benefits:

- There are 5 different Blade Ceiling Tile profiles and blade spacing options.
- Simple and efficient installation process requiring minimal on-site installation labor.
- Tiles and Panels can be installed easily into existing grids.
- Installed Tiles and Panels can be easily removed.
- Ceiling tiles incorporate an elegant ceiling grid reveal which compliments the blade orientation.
- The 23 5/8" x 23 5/8" ceiling tiles may be arranged in a linear or checker board orientation.
- The 3018-14 Ceiling Tiles align with 3018-7 Panels, and 3060-8 Ceiling Tiles align with 3060-4 Panels, providing potential horizontal to vertical blade alignment in ceiling to wall installations.
- 23 5/8" x 23 5/8" tiles: (8) tiles per box
 47 1/4" x 23 5/8" tiles: (4) tiles per box
 95 1/2" x 23 5/8" tiles: (2) tiles per box

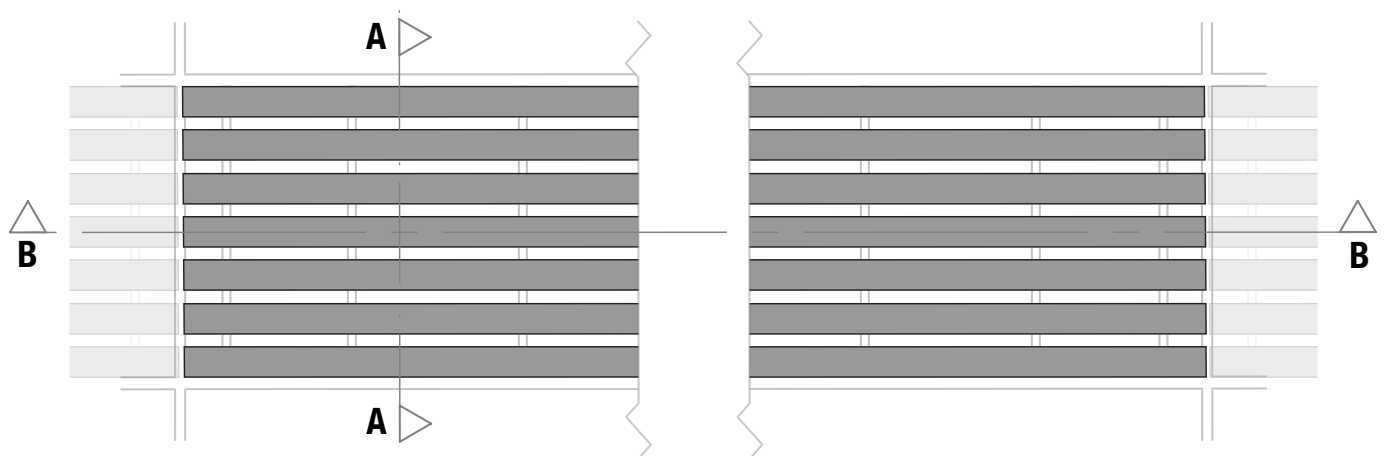
ECOUSTIC® TIMBER CEILING BLADE - ACOUSTIC



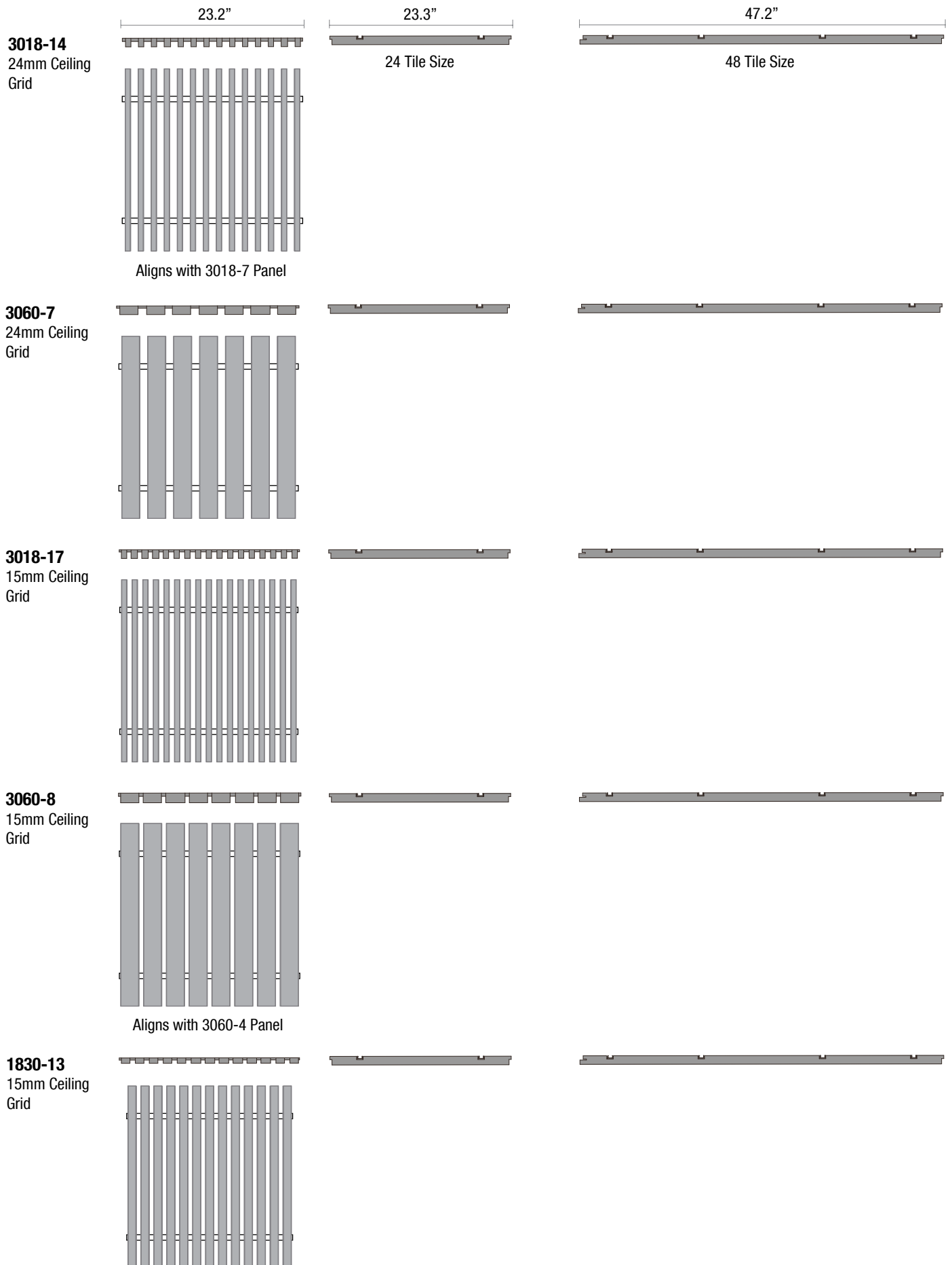
DIMENSIONS - BLADE SIZES - QUANTITIES - WEIGHTS

DESIGN	3018-14	3060-7	3018-17	3060-8	1830-13
Blade Depth (inches)	1.18"	1.18"	1.18"	1.18"	0.71"
Blade Thickness (inches)	0.71"	2.36"	0.71"	2.36"	1.18"
Blades Per Tile	14	7	17	8	13
Grid Size	24mm	24mm	15mm	15mm	15mm
Weight (Lbs per tile)	23⁵/₈" x 23⁵/₈" Ceiling Tiles				
Birch Ply	7.2 lbs	N/A	8.3 lbs	N/A	N/A
Hemlock	5.5 lbs	8.8 lbs	6.6 lbs	10.5 lbs	5.5 lbs
Spotted Gum	11.6 lbs	N/A	14.4 lbs	N/A	11 lbs
Western Red Cedar	4.4 lbs	6.6 lbs	5 lbs	7.2 lbs	3.9 lbs
QTY Per Box	8	8	8	8	8
Weight (Lbs per tile)	47¹/₄" x 23⁵/₈" Ceiling Tiles				
Birch Ply	14.3 lbs	N/A	16.5 lbs	N/A	N/A
Hemlock	11 lbs	17.6 lbs	13.2 lbs	21 lbs	11 lbs
Spotted Gum	24.25 lbs	N/A	28.6 lbs	N/A	22 lbs
Western Red Cedar	8.8 lbs	13.2 lbs	9.9 lbs	14.3 lbs	7.7 lbs
QTY Per Box	4	4	4	4	4
Weight (Lbs per tile)	95¹/₂" x 23⁵/₈" Ceiling Tiles (custom)				
Birch Ply	28.6 lbs	N/A	33 lbs	N/A	N/A
Hemlock	22 lbs	35.3 lbs	26.5 lbs	41.9 lbs	22 lbs
Spotted Gum	N/A	N/A	N/A	N/A	N/A
Western Red Cedar	17.6 lbs	26.5 lbs	19.9 lbs	28.7 lbs	15.4 lbs
QTY Per Box	2	2	2	2	2

Plan View



SECTIONAL RENDERINGS

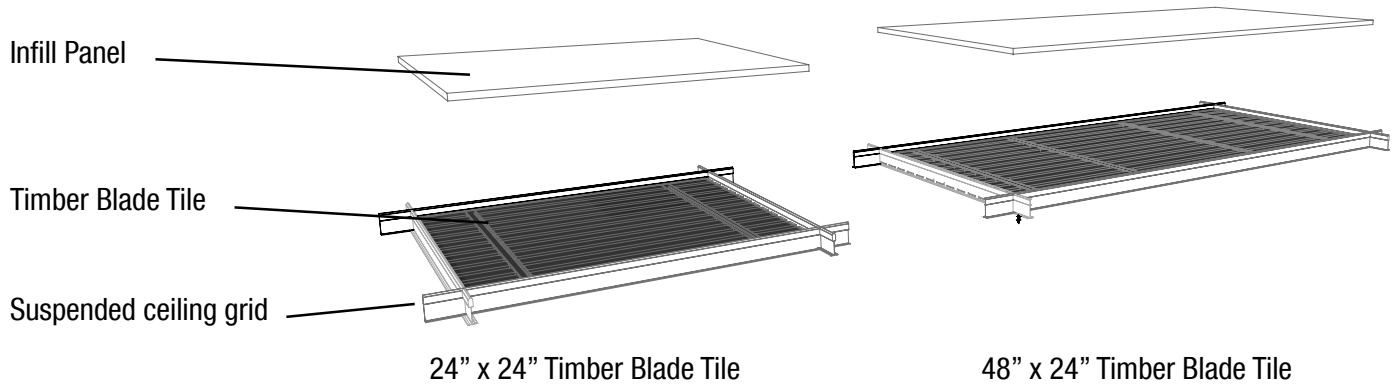


ECOUSTIC® TIMBER CEILING BLADE

ecoustic® Infill Assembly Instructions

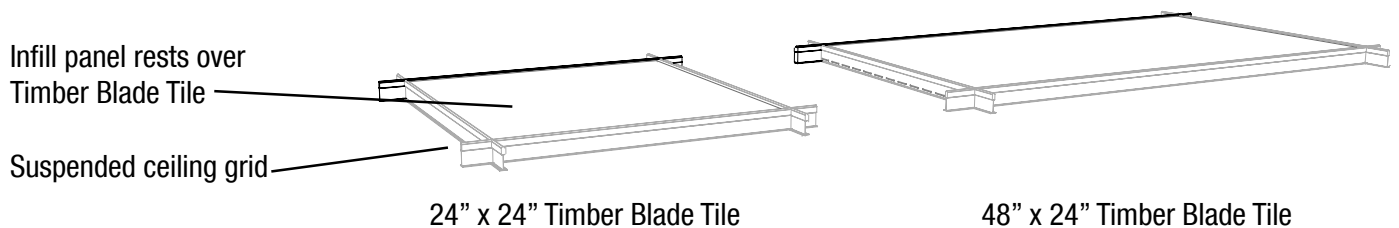
Step 1

Rest Timber Blade Tile within suspended ceiling grid



Step 2

Use access from adjoining ceiling grid open area to place Infill panels over the previously installed Timber Blade Tiles.



Step 3

Rest Infill panels over Timber Blade Tile, ensuring the Infill is located within suspended ceiling grid T bars.
Please note: Hold or secure Infill panel to Timber Blade Tile to be installed within a ceiling space.