

# VERONA | 806 SPECIFICATIONS



**unika vaev**  
INSTYLE

*Bringing Design to Life*

# VERONA | 806 COLOR



ADRIATIC



ANISEED



BLACKBUTT



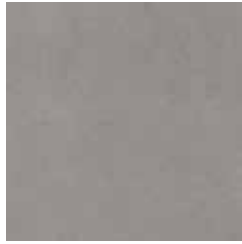
BRONZE



BUTTERSCOTCH



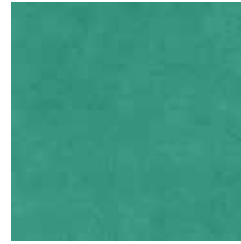
CHESTNUT



CIRRUS



JUNIPER



LAGOON



MIMOSA



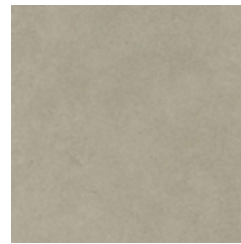
MOSS



NUTMEG



PARCHMENT



PEBBLE



PORCELAIN



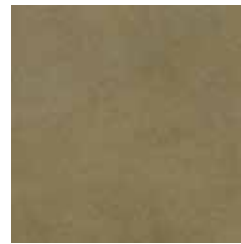
ROSEWOOD



SAFFRON



SEPIA



SPINIFEX



TARRAGON



WALNUT

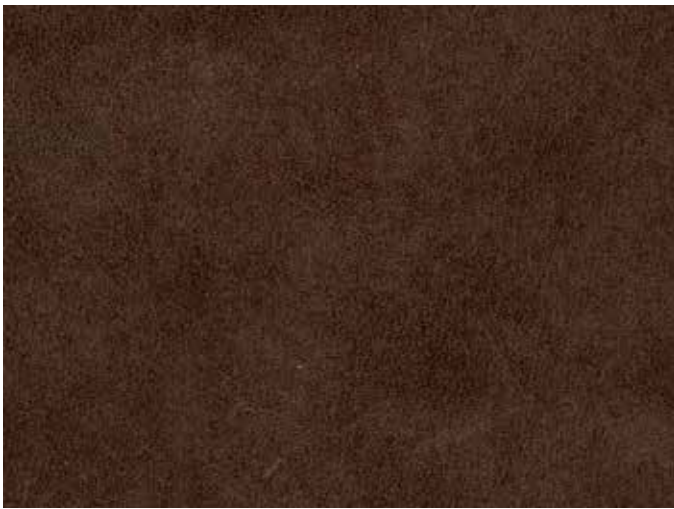


WASABI

Leather may vary in color due to the nature of the media  
Please refer to website for current color range

**unika vaev**  
INSTYLE

# VERONA - ANILINE LEATHER | 806



CONTENT	100% Leather
AVERAGE HIDE SIZE	55-60 Sq Ft (5.5 sqm)
THICKNESS	.04-.05" (1mm - 1.2mm)
WEIGHT	2.4 Oz / Sq Ft (735 gsm)
LEATHER TYPE	Aniline

FLAMMABILITY  
AS/NZS 1530.3  
AS/NZS 3837  
IMO Resolution A.652(16)

APPLICATION Upholstery and wall panels for commercial, residential, and hospitality.

PLEASE NOTE Only the very best raw hides are used for Aniline leathers. The natural characteristics such as insect bites, fat wrinkles, growth marks and healed scars can still be visible, a sign of a superior natural leather with its own individuality. Aniline leathers do not have any protective coating or pigment on the surface and are therefore more susceptible to fading from sunlight exposure. Care should be taken in high-traffic areas where food and drink spillages could stain the leather.

## ENVIRONMENT

- 100% rapidly renewable / agricultural by-product.
- Verona is produced at a European tannery that complies with EU REACH Regulation for the use of chemicals.
- Certified as low-VOC, meeting the Green Star emission requirements. Test certificate available on request.
- Reusable

## CARE

- Avoid placing leather in direct sunlight, weather and at least two feet from heat source.
- Do not use harsh chemicals, shoe polish, saddle soap or unidentified leather cleaners, solvents and oils.
- Keep free of dust and grit. Dust before cleaning. If vacuuming, use a soft brush attachment.
- Gently remove all spills immediately with clean damp (not wet) cloth. Do not scrub or rub hard.
- Regularly clean contact areas such as arms and head rests to avoid build up of perspiration and body oils, which may discolor the leather.
- We recommend professional cleaning with specialist leather cleaners and conditioners in strict accordance with manufacturer's instructions.
- A copy of Leather Care for Aniline Leather is available on our website.

## SEATING COMFORT RATING



A rating to determine a leather's seating comfort based upon the leather's ability to breathe and absorb moisture. Tested to ASTM E 96 M-05. Verona achieves an Excellent Seating Comfort rating.