

ECOUSTIC® CEILING FLATS



unika vaev

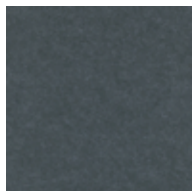
INSTYLE

Hear yourself think®

ECOUSTIC® CEILING FLATS COLOR OPTIONS

SC Core Colors - 100% PET

SC Panel 0.35"



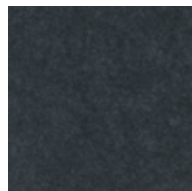
ALLOY



DAPPLE



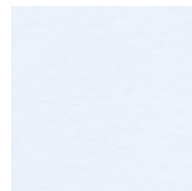
DUNE



EQUINOX



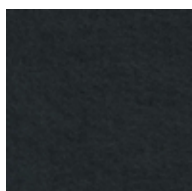
MARBLE



MILK



ZINC



ZODIAC

SC Panel 0.47"



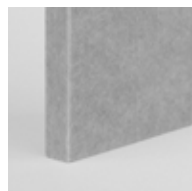
ALMOND



ARIZONA



BLUEBELL



COOL



DENIM



FAWN



GALAXY



HORIZON



IRIS



LEAF



OLIVE



OXIDE



SNOWDROP



TUNGSTEN



VENUS

SC Panel 0.94"



ASH



GRAPHITE



NERO



PURE



STONE

ECOUSTIC® CEILING FLATS COLOR OPTIONS

ecoustic® Panel Colors - 100% PET (>80% Recycled PET)

ecoustic® Panel 0.53"



AQUA



AUBERGINE



BALTIC



BERRY



CAMEO



CAPER



CHARCOAL



COBALT



CREAM



DOVE



FIELD



FOSSIL



FRESCO



GREEN



INDIGO



JET



LEMON



LIGHT GREY



LIME



NATURAL



NAUTICAL



OATMEAL



OPAL



ORANGE



OYSTER



PAPRIKA



PEWTER



QUARTZ



RED



SKY



SPRAY



TAUPE



WHITE



YELLOW

ECOUSTIC® CEILING FLATS COLOR OPTIONS

ecoustic® Panel Colors - 100% PET (>80% Recycled PET)

ecoustic® Panel 0.98"



AQUA



AUBERGINE



BALTIC



BERRY



CAMEO



CAPER



CHARCOAL



COBALT



CREAM



DOVE



FIELD



FOSSIL



FRESCO



GREEN



INDIGO



JET



LEMON



LIGHT GREY



LIME



NATURAL



NAUTICAL



OATMEAL



OPAL



ORANGE



OYSTER



PAPRIKA



PEWTER



QUARTZ



RED



SKY



SPRAY



TAUPE



WHITE

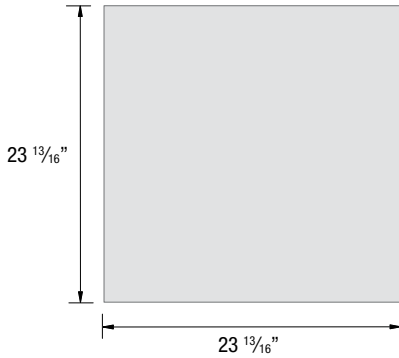


YELLOW

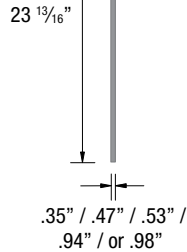
ECOUSTIC® CEILING FLATS

Front View

24 Tile: 23 13/16" x 23 13/16"

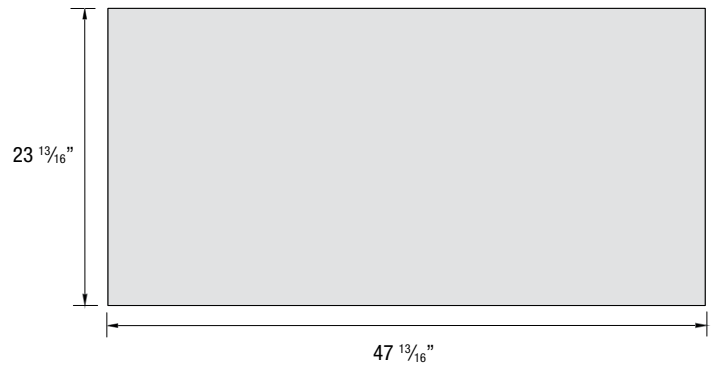


Side View



Front View

48 Tile: 47 13/16" x 23 13/16"



COMPOSITION

Felt Faced Options: 100% PET (>80% Recycled PET)
Solid Core Options: 100% PET

DIMENSIONS

24 Tile: 23 13/16" x 23 13/16" (605mm x 605mm)
48 Tile: 47 13/16" x 23 13/16" (1215mm x 605mm)

THICKNESS

Available in five thicknesses:
.35" / .47" / .53" / .94" / .98"
(9mm / 12mm / 13.5mm / 24mm / 25mm)

FIRE RATING

AS/ISO 9705 Group 1
ASTM E84 Class A, Class C for the .94" profile

APPLICATION

Ceiling

ACOUSTIC

AS/ISO 354 Shown below by thickness:
.35" Tile- NRC 0.85 (8" air gap)
.47" Tile- NRC 0.85 (8" air gap)
.53" Tile- NRC 0.85 (16" air gap)
.94" Tile- NRC 0.95 (8" air gap)
.98" Tile- NRC 0.90 (16" air gap)
*Refer to acoustic graph on following page

DESCRIPTION

ecoustic® Ceiling Flats are highly functional, decorative ceiling tiles designed to fit into new and existing grid systems.

Designed for the Environment

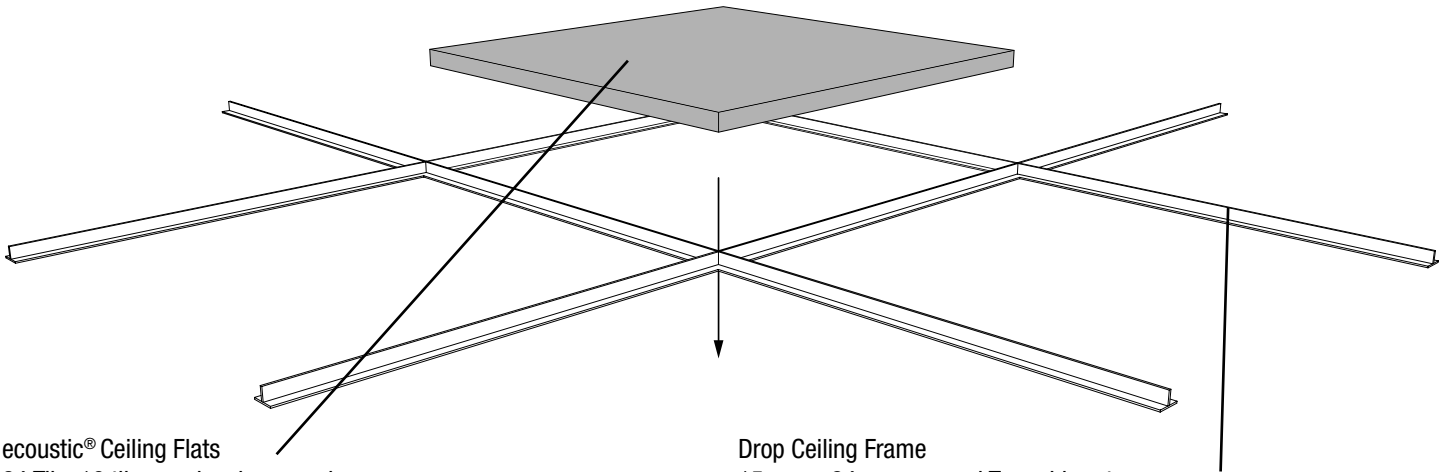
- Mindful MATERIALS
- Cal 01350 Compliant
- Low-VOC Certified
- Oeko-Tex Certified (SCC Flats)
- Declare CDHP Emissions Compliant
- HHI Compliant
- Global Greentag (Felt-faced Flats)
- ISO 14001-certified Environmental Management System
- Solid Core panels used to produce ecoustic® Flats are Cradle to Cradle - Bronze certified (.35", .47", + .94" thicknesses)
- No FR Additives

Building Rating Systems: : Ceiling Flats will contribute the following points for Green Star, LEED + WELL building standards

Criteria	Green Star	LEED	WELL
Low VOC	✓	✓	✓
Recycling Program	✓	✓	N/A
Recycled Content (Felt faced Flats)	✓	✓	N/A
3rd Party Greentag Certification (Felt faced Flats)	✓	✓	✓
3rd Party C2C Certified (Solid Core Flats)	-	✓	✓
Manufacturer Certified EMS (Solid Core Flats)	✓	✓	N/A
EPD (Felt faced Flats)	✓	✓	N/A
Toxic Material Reduction	N/A	N/A	✓
Sound Reducing Surfaces	N/A	N/A	✓

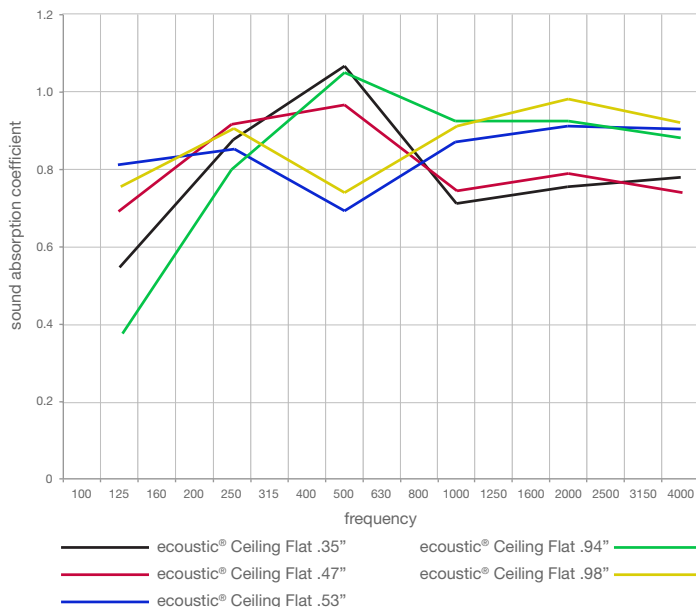


ECOUSTIC® CEILING FLATS



ecoustic® Ceiling Flats
 24 Tile: 16 tiles per box in one color
 48 Tile: 8 tiles per box in one color

Drop Ceiling Frame
 15mm + 24mm exposed Tee grid system
 [Not supplied]



IMPORTANT INFORMATION

Drop Ceiling Specification: ecoustic® Ceiling Flats are designed to be compatible with 15mm and 24mm Exposed Tee grid systems. Ensure the tile is suitable for your selected system prior to ordering.

Moisture Absorption: Exposure to an atmosphere of 50% and 95% RH for four days provides moisture absorption of less than 0.2% per volume. As ecoustic® Ceiling Flats is 100% polyester, it will not degrade over time due to moisture, mildew or rot in office environments.

Fixtures: Any fixtures must be supported independent to the ecoustic® Ceiling Flats tile. The tiles can be cut on site to accommodate for new and existing lighting and fixtures. When cutting use a new blade for each cut and ensure the area to be cut is fully supported throughout. Cut from the tile face with care.

HVAC: Ensure ecoustic® Ceiling Flats are compliant with the specified HVAC system. ecoustic® Ceiling Flats are recommended for Ducted Return Air and is not Plenum Return Air rated.

Back Loading: ecoustic® Ceiling Flats are not suitable for back loading. Loads must be supported independently by the grid or through the use of additional fixtures.

Toxicity: Polyester is non-toxic and is classed the same as wood under the State of New York Article 15 Part 1120. ecoustic® Ceiling Flats do not contain any Red List Chemicals (USA EPA).

Please Note: ecoustic® Ceiling Flats .53" + .98" are based on low energy manufacturing and made from up to 80% post-consumer and post-industrial recycled content. ecoustic® Ceiling Flats .53" + .98" are Greentag Level A certified and ecoustic® Ceiling Flats .35", .47" + .94" are Oeko-Tex certified. Ceiling Flats have been designed for disassembly, with all components able to be fixed without the use of glues and adhesives. ecoustic® Ceiling Flats are recyclable.