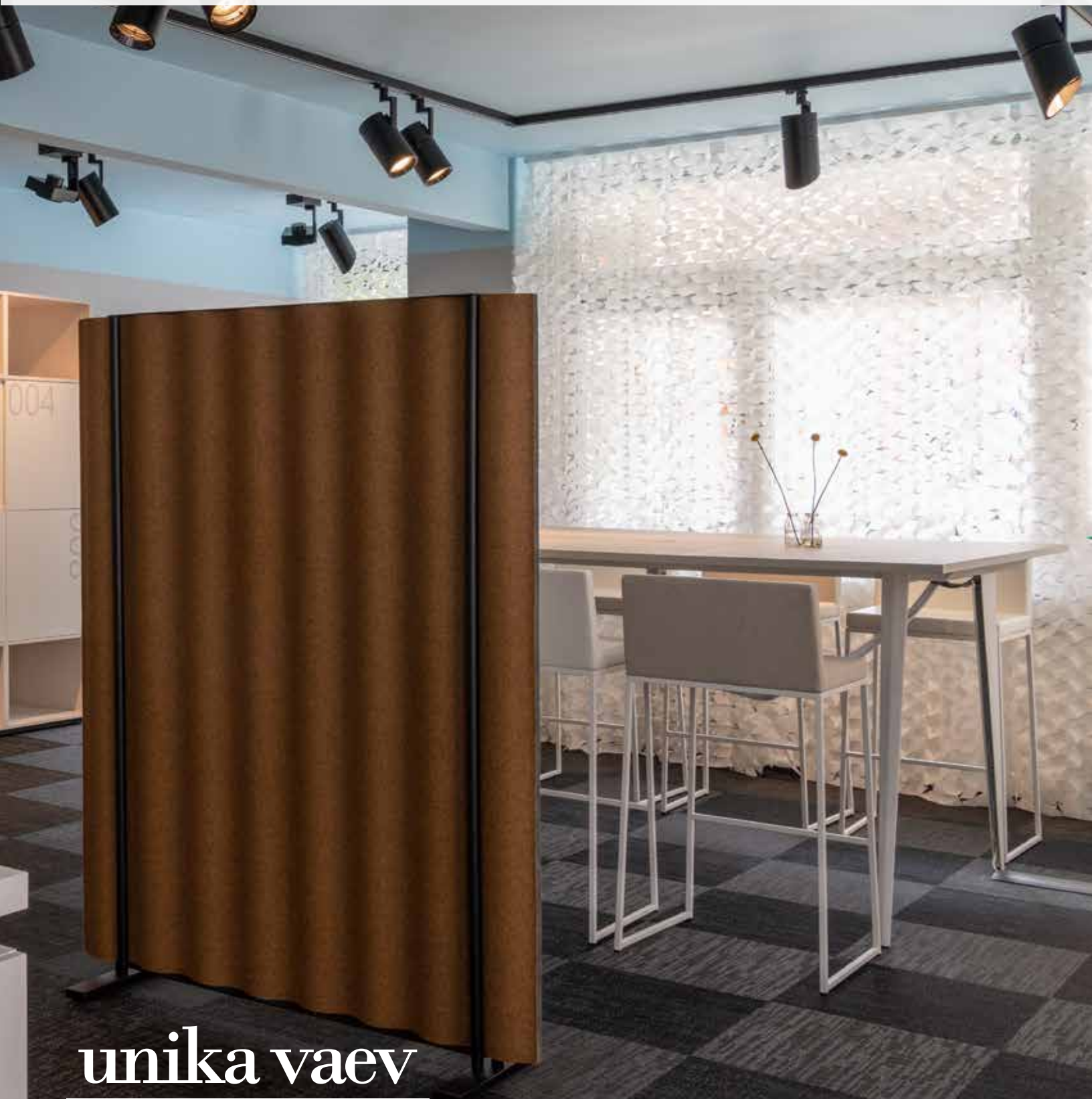


SCALA FLOOR SCREEN



unika vaev

abstracta

Hear yourself think®

SCALA FLOOR SCREEN COLORS

STANDARD OPTIONS

Blazer



cuz28 silverdale



cuz30 silcoates



cuz33 latymer



cuz1e surrey



cuz1w newcastle



cuz1n cardif

Snow White



90 snow white

Soundfelt



15 White



16 Grey



17 Dark Grey

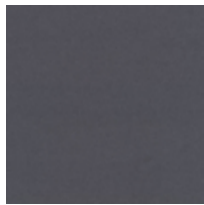


18 Black

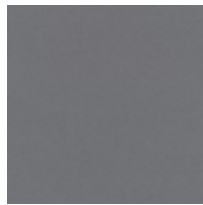
Divina



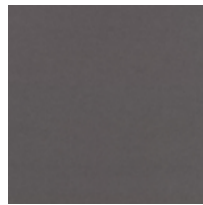
c0106 steel water



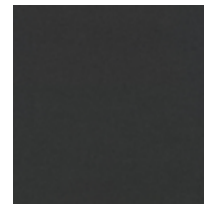
c0154 blue steel



c0171 grey cloud



c0173 steel



c0181 anchor



c0191 charcoal



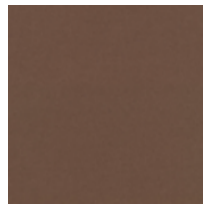
c0224 thunder



c0236 desert gold



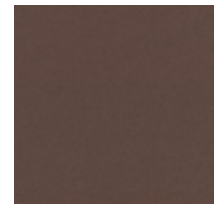
c0246 harvest gold



c0334 fawn



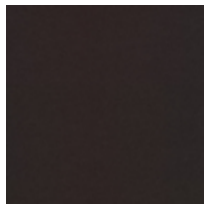
c0346 deep golden



c0356 artichoke



c0376 dusty violet



c0384 sage pine



c0393 mocha



c0426 canary gold



c0444 sunflower field



c0462 yellow gold

Lead times are contingent on color/finish availability
Product may vary in color due to the nature of the media
Please refer to website for current color range + larger sample swatch

unika vaev
abstracta

SCALA FLOOR SCREEN COLORS

STANDARD OPTIONS

Divina continued



c0526 apricot sherbet



c0536 tangerine



c0542 orange



c0552 santa fe



c0562 pumpkin orange



c0584 brick clay



c0623 tomato rouge



c0626 pink berry



c0636 very berry



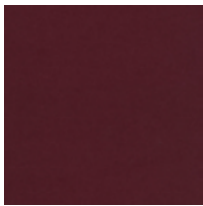
c0652 boysenberry



c0662 plum berry



c0666 purple fun



c0671 deep magenta



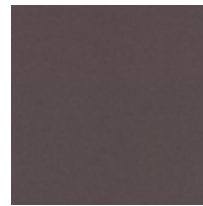
c0676 lavender sky



c0684 almost royal



c0686 very royal



c0691 feeling grey



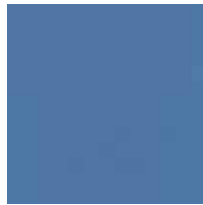
c0692 purple



c0696 violet



c0712 blue sky



c0742 deep sky



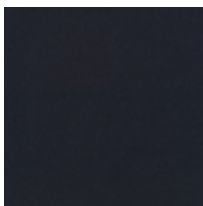
c0756 lapis



c0782 purple velvet



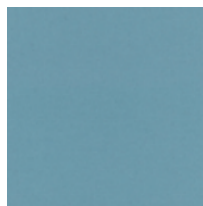
c0791 blue velvet



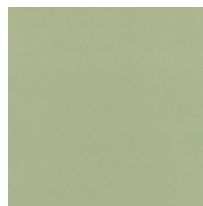
c0793 basque



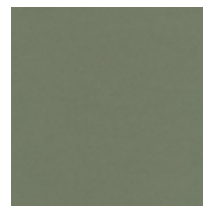
c0826 cerulean



c0836 powder blue



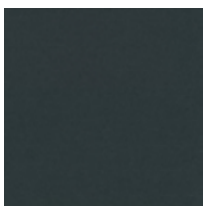
c0846 pistachio fern



c0856 green tea



c0876 eden forest



c0886 jade forest



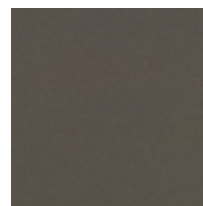
c0893 teal velvet



c0922 kelly



c0936 avocado



c0944 smoky taupe



c0956 pickle

Lead times are contingent on color/finish availability
Product may vary in color due to the nature of the media
Please refer to website for current color range + larger sample swatch

unika vaev
abstracta

SCALA FLOOR SCREEN COLORS

STANDARD OPTIONS

Divina continued



c0966 fern



c0948 carob

NON-STANDARD OPTIONS

Blazer



cuz1j
aberlour



cuz3b
abertay



cuz02
aston



cuz3d
barlborough



cuz2s
barnard



cuz35
bromsgrove



cuz53
bryanston



cuz1k
camphill



cuz2q
dartmouth



cuz58
dunhurst



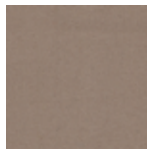
cuz90
edge hill



cuz1y
edinburgh



cuz2w
eyesbury



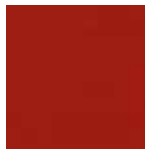
cuz47
fairfield



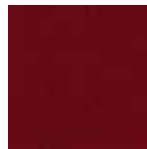
cuz1m
glasgow



cuz62
glenalmond



cuz39
goldsmith



cuz63
handcross



cuz2t
holyoke



cuz1p
hull



cuz67
kingsmead



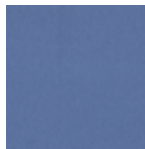
cuz26
knightsbridge



cuz21
magdalene



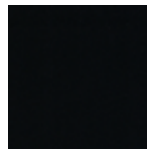
cuz1v
manchester



cuz3c
marymount



cuz3a
montcrest



cuz08
napier



cuz11
newport



cuz18
oriel



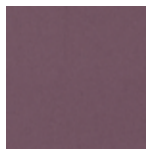
cuz09
oxford



cuz2x
penola



cuz1r
plymouth



cuz3e
scottsdale



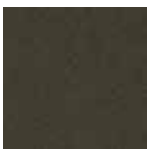
cuz1t
sheffield



cuz86
andrews



cuz2r
stanford



cuz31
trevelyan



cuz2y
tyndale



cuz1f
ulster



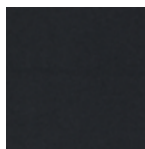
cuz2u
vassar



cuz13
wellington



cuz82
wesley



cuz12
winchester



cuz2z
woodcroft

Lead times are contingent on color/finish availability
Product may vary in color due to the nature of the media
Please refer to website for current color range + larger sample swatch

unika vaev
abstracta

SCALA FLOOR SCREEN



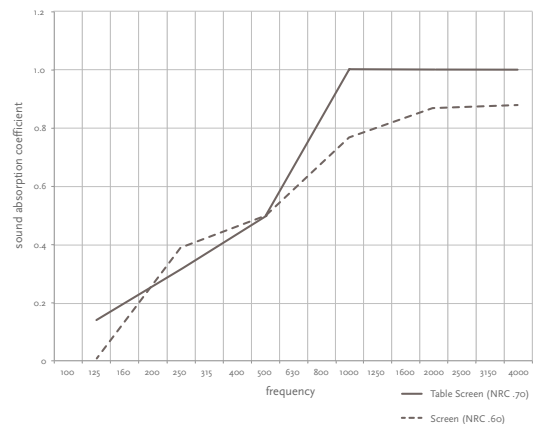
DESIGNER	Anya Sebton
CONTENT	<p>Core: 100% Polyester Frame: 100% Molded Polyester Base: 100% Aluminum Cover: Divina 100% New Wool Blazer 100% Wool Snow White 100% Polyester Soundfelt 100% PET (51% recycled)</p>
DIMENSIONS	<p>Widths: 23.75", 35.6", or 47.5" Height: 64.9" Depth: 2.36"</p>
FLAMMABILITY	Please Inquire
ACOUSTIC	NRC: 0.60
APPLICATION	Screen
DESCRIPTION	Scala floor screen is made from compressed felt fabric on a molded sound-absorbing polyester core. The design of the sound-absorbent Scala is not only developed for visual reasons, but primarily to contribute to a softer soundscape.

BENEFITS

Designed for the Environment: Scala is manufactured on the basis of technical, environmental and production ethical requirements. There are no emissions to air, water or land during the production of Scala. The sound-absorbent core of Scala contains recycled materials. Scala Screen is recyclable.

- No VOCs
- California 01350 Emissions Compliant
- HHI Compliant
- EPD
- HPD

Improved Sound Absorption: Scala Screen is ideal for high-frequency absorption and achieves an NRC 0.60 rating.



Please Note: Panels CANNOT be cut in the field.

