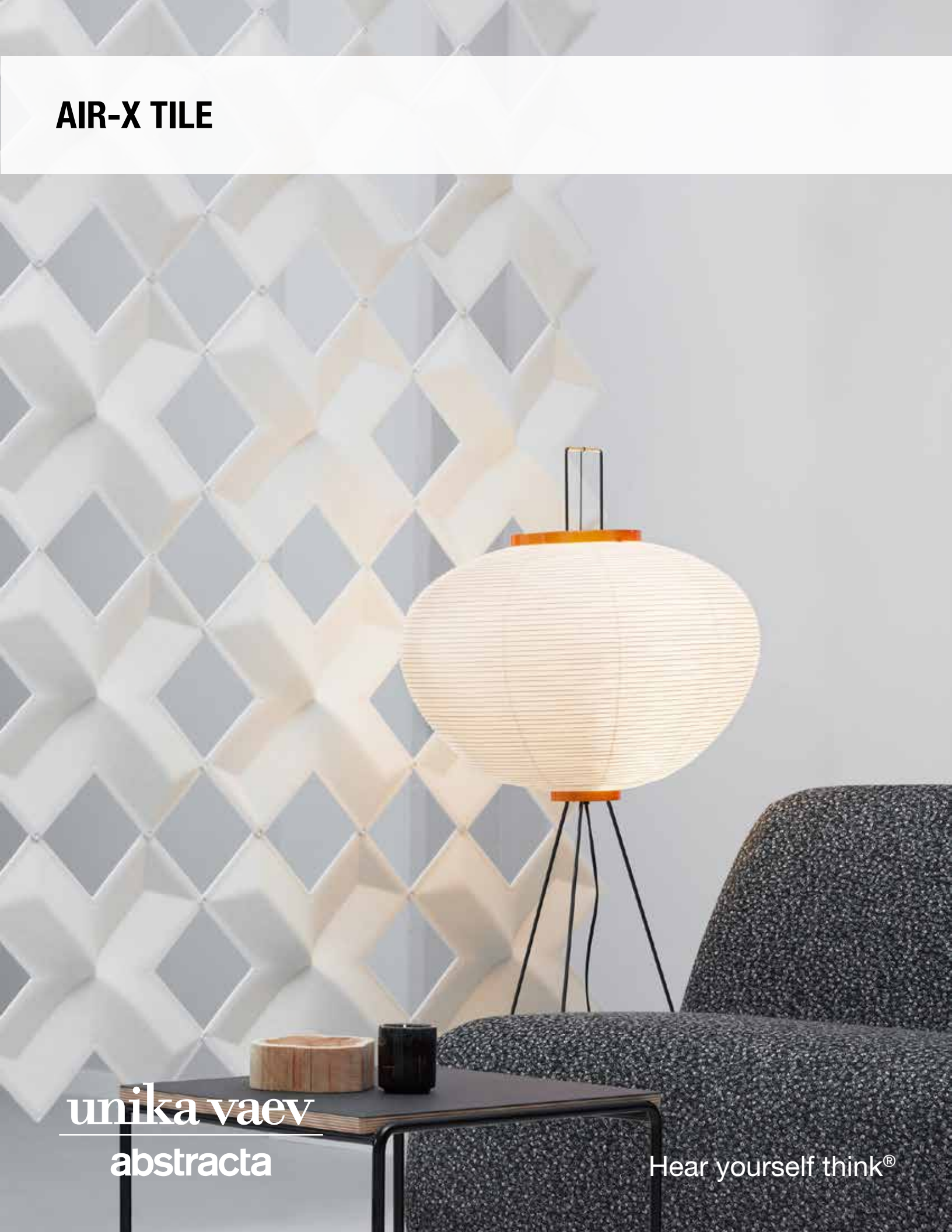


AIR-X TILE



unika vaev
abstracta

Hear yourself think®

AIR-X TILE COLORS

STANDARD OPTIONS

Air Series



(20)
blue



(22)
petrol



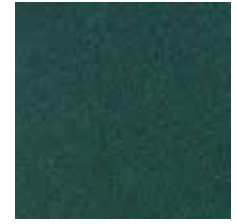
(25)
turquoise



(30)
red



(34)
light pink



(45)
dark green



(60)
light grey



(65)
grey

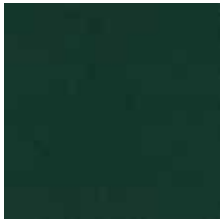


(80)
black



(90)
white

Blazer



(cuz1n)
cardiff



(cuz33)
latymer



(cuz1w)
newcastle



(cuz30)
silcoates



(cuz28)
silverdale



(cuz1e)
surrey

NON-STANDARD OPTIONS

Air Series



(33)
magenta



(35)
orange



(40)
citron green



(41)
light blue



(42)
purple



(43)
red pink



(44)
light brown



(46)
dark red

Lead times are contingent on color/finish availability
Product may vary in color due to the nature of the media
Please refer to website for current color range + larger sample swatch

unika vaev
abstracta

AIR-X TILE COLORS

NON-STANDARD OPTIONS

Air Series continued



(47)
dark blue

(48)
dark brown

(49)
yellow

(50)
dark blue
melange

(51)
brown grey
melange

(52)
dark red
melange

(53)
red brown
melange

(54)
middle green



(55)
dark green red
melange

(56)
hunter green

(57)
light green

(70)
brown

Blazer



(cuz1J)
aberlour

(cuz3b)
abertay

(cuz02)
aston

(cuz3d)
barlborough

(cuz2s)
barnard

(cuz35)
bromsgrove

(cuz53)
bryanston

(cuz1k)
camphill

(cuz2q)
dartmouth



(cuz58)
dunhurst

(cuz90)
edge hill

(cuz1y)
edinburgh

(cuz2w)
eynesbury

(cuz47)
fairfield

(cuz1m)
glasgow

(cuz62)
glenalmond

(cuz39)
goldsmith

(cuz63)
handcross



(cuz2t)
holyoke

(cuz1p)
hull

(cuz67)
kingsmead

(cuz26)
knightsbridge

(cuz21)
magdalene

(cuz1v)
manchester

(cuz3c)
marymount

(cuz3a)
montcrest

(cuz08)
napier

Lead times are contingent on color/finish availability
Product may vary in color due to the nature of the media
Please refer to website for current color range + larger sample swatch

unika vaev
abstracta

AIR-X TILE COLORS

NON-STANDARD OPTIONS

Blazer continued



(cuz1l)
newport



(cuz18)
oriel



(cuz09)
oxford



(cuz2x)
penola



(cuz1r)
plumouth



(cuz3e)
scottsdale



(cuz1t)
sheffield



(cuz86)
st andrews



(cuz2r)
stanford



(cuz31)
trevelyan



(cuz2y)
tyndale



(cuz1f)
ulster



(cuz2u)
vassar



(cuz13)
wellington



(cuz82)
wesley



(cuz12)
winchester



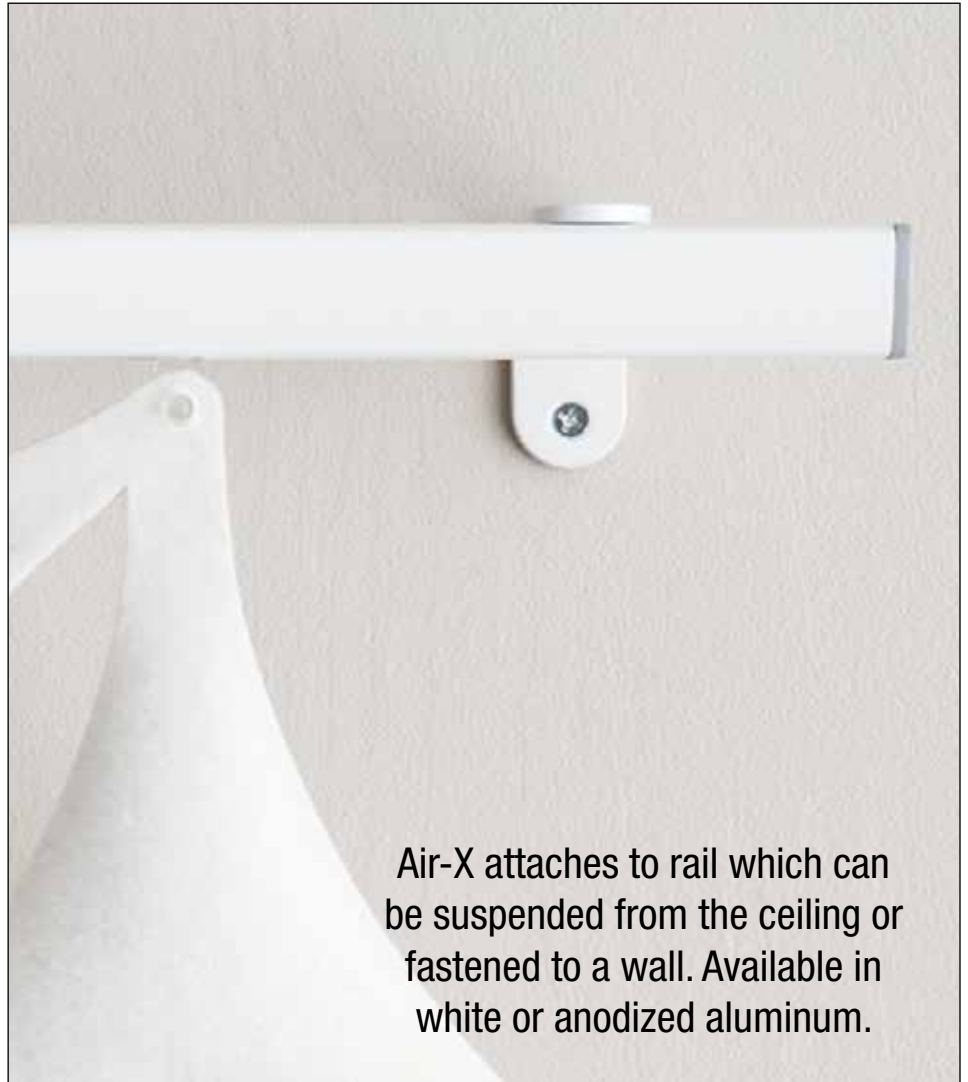
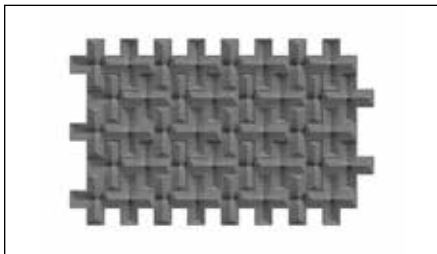
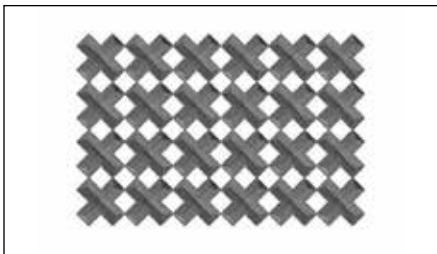
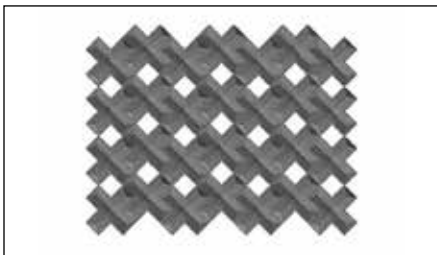
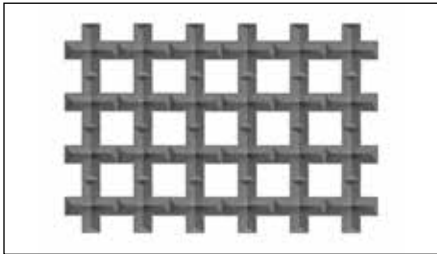
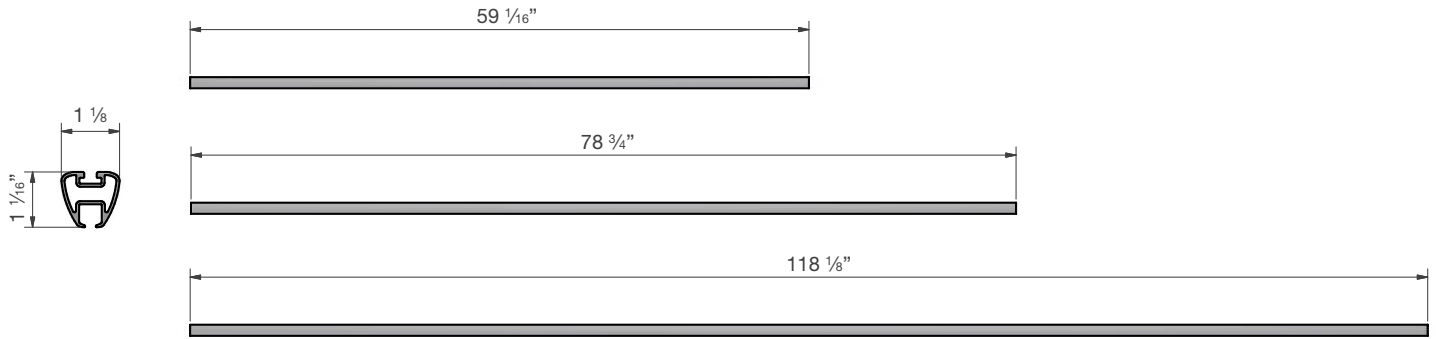
(cuz2z)
woodcroft



Lead times are contingent on color/finish availability
Product may vary in color due to the nature of the media
Please refer to website for current color range + larger sample swatch

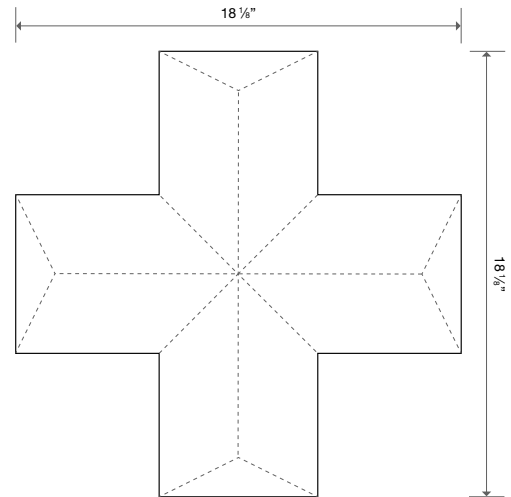
unika vaev
abstracta

AIR RAIL DIMENSIONS



Air-X attaches to rail which can be suspended from the ceiling or fastened to a wall. Available in white or anodized aluminum.

AIR-X TILE



DESIGNER

Stefan Borselius

CONTENT

Core: 100% Molded Polyester Felt
Cover: 100% Polyester Felt (Air Series) or
100% Virgin Wool (Blazer)

DIMENSIONS

18 1/8" x 18 1/8" (460mm x 460mm)

THICKNESS

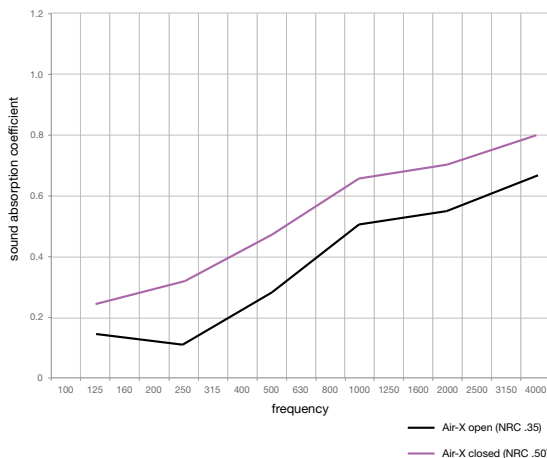
9/16" (15mm)

FLAMMABILITY

Please inquire with Unika Vaev customer service

ACOUSTIC

NRC: 0.35 - 0.50 depending on formation



APPLICATION

Wall, Ceiling

DESCRIPTION

With Air-X, Stefan Borselius enters a world of symbols, typography, and letters. Just like the letters of the alphabet, the ceiling-suspended sound-absorber Air-X allows you to create an infinite number of configurations.

BENEFITS

Designed for the Environment: Air-X is manufactured on the basis of technical, environmental and production ethical requirements. There are no emissions to air, water or land during the production of Aircone. The sound-absorbent core of Aircone contains recycled materials. Air-X is recyclable.

Installation: Air-X may be mounted to the ceiling or wall with a straight rail in three lengths, 59", 78.75" or 118". Those rails can be joined or cut on site. Modules hook into one another using small plastic clips creating screen partitions.

Improved Sound Absorption: Air-X is ideal for high frequency absorption and achieves an NRC range of 0.35 - 0.50 depending on the formation of the tiles.

Accessories Provided: Drop ceiling brackets to mount Air-X directly to a drop ceiling. A wire kit which includes (4) 118" wires, (4) wire locks and hardware to hang the rail a distance from the ceiling. A roller is also available allowing the Air-X modules roll along the rail, used in lieu of attachment clips.

General Care: To preserve the fabric color and appearance of the fabric, Air series modules should be vacuumed regularly with a soft nozzle.

Stain Removal: Use uncolored paper towels or cloths to soak up as much of the stain as possible. Dried stains should be vacuumed. Moisten the stain lightly with a clean white cotton cloth, lukewarm water, and possibly a small amount of pH-neutral detergent. Press a dry cloth or uncolored paper towel against the fabric so that moisture and dirt are absorbed. Repeat process until the stain is gone. Be sure to use clean water without detergent for the final treatment.